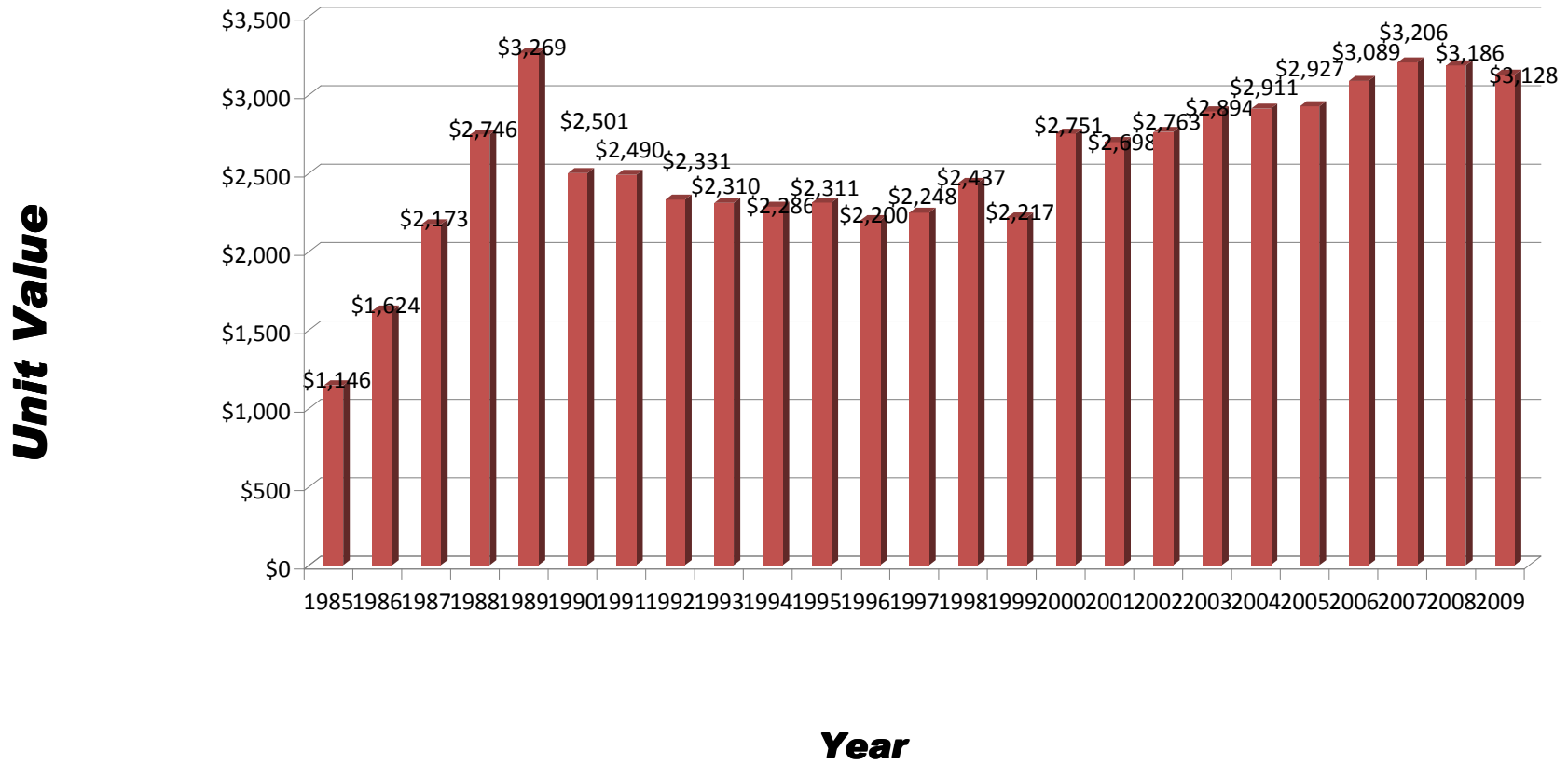


## History of State Aid Unit Value



Year	Unit Value	Percent Change	Year	Unit Value	Percent Change	Year	Unit Value	Percent Change	Year	Unit Value	Percent Change
1985	\$ 1,145.75		1991	\$ 2,489.57	-0.4%	1997	\$ 2,247.51	2.2%	2003	\$ 2,894.40	4.8%
1986	\$ 1,624.04	41.7%	1992	\$ 2,331.48	-6.4%	1998	\$ 2,437.46	8.5%	2004	\$ 2,911.36	0.6%
1987	\$ 2,173.36	33.8%	1993	\$ 2,309.91	-0.9%	1999	\$ 2,216.66	-9.1%	2005	\$ 2,926.77	0.5%
1988	\$ 2,746.48	26.4%	1994	\$ 2,285.78	-1.0%	2000	\$ 2,751.05	24.1%	2006	\$ 3,088.52	5.5%
1989	\$ 3,268.71	19.0%	1995	\$ 2,311.25	1.1%	2001	\$ 2,698.21	-1.9%	2007	\$ 3,206.39	3.8%
1990	\$ 2,500.58	-23.5%	1996	\$ 2,199.69	-4.8%	2002	\$ 2,762.97	2.4%	2008	\$ 3,186.33	-0.6%
									2009	\$ 3,128.01	-1.8%